

# CF ULTRA LOW RANGE PRESSURE DIFFERENCE SWITCHES

## Ultra Low Range Pressure Difference Switches with User Adjustable Knob

### Salient Features

#### Easy to See, Easy to Use!

Set Point easily user adjustable with visible scale in Pascal. (no need of pressure gauge).

Differential easily adjustable with just a screwdriver

#### Light Weight!

150 gms

#### Flexible!

Direction of PG 11 cable entry can be rotated in steps of 120°

#### Long Lasting!

10<sup>6</sup> switching operations

#### More Options!

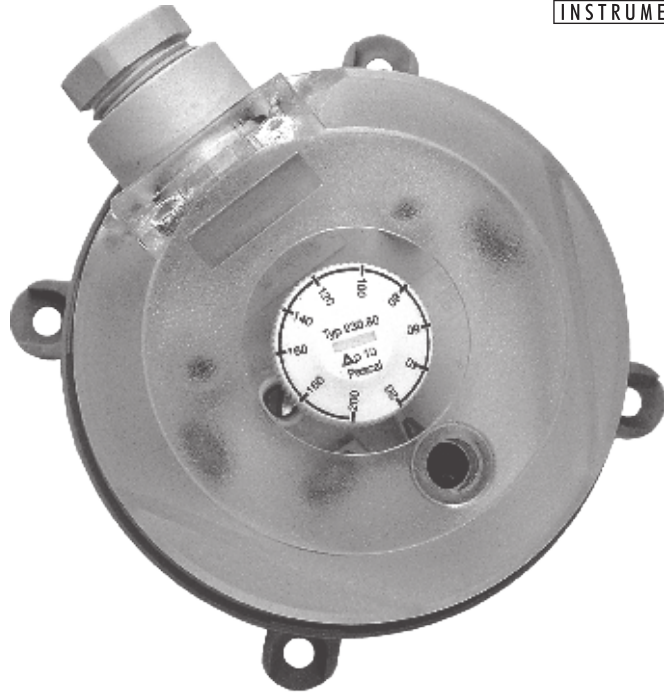
Available in a wide range

#### Trusted all over!

Tested and proven

### Technical Specifications

- Media - Air, non-flammable gases and non-aggressiv gases.
- Housing Material - Body of PA 6.6 and Cover of PS
- Protection category - IP54 with cover.
- Maximum working pressure - 10 Kpa / 1019.74 mm wg.
- Electrical Rating - Maximum 1.0A (.4 A) / 250 VAC.
- Electrical Connection - AMP flat plug 6.3 mm x 0.8 mm in accordance with DIN 462244.
- Cable Entry - PG11
- Mounting Lugs - integrated in bottom Housing.
- High Pressure and Low Pressure port of Outer Diameter 6 mm.



### Range Selection Table

Range Code (Orion)	Adjustment range for upper switching pressure Pa (mm wg)	Switching differential set to Pa (mm wg)
CF80	20 ~ 200 (2.039 ~ 20.395)	10 (1.020)
CF81	40 ~ 100 (4.079 ~ 10.197)	20 (2.039)
CF83	50 ~ 500 (5.099 ~ 50.987)	20 (2.039)
CF85	200 ~ 1000 (20.395 ~ 101.974)	100 (10.197)
CF86	500 ~ 2500 (50.987 ~ 254.935)	150 (15.296)
CF87	1000 ~ 4000 (101.974 ~ 407.896)	250 (25.494)

### How to order CF series Low Range Pressure Difference Switches

Please specify the Range Code eg. CF82 or CF85

# ULTRA LOW RANGE PRESSURE DIFFERENCE SWITCHES

# CF

## INSTALLATION AND OPERATING INSTRUCTIONS

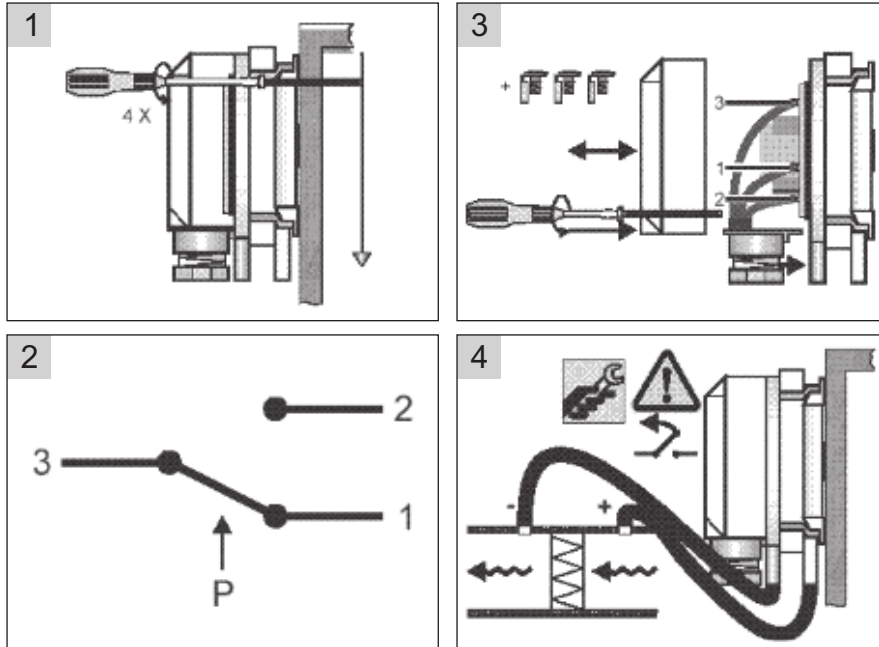
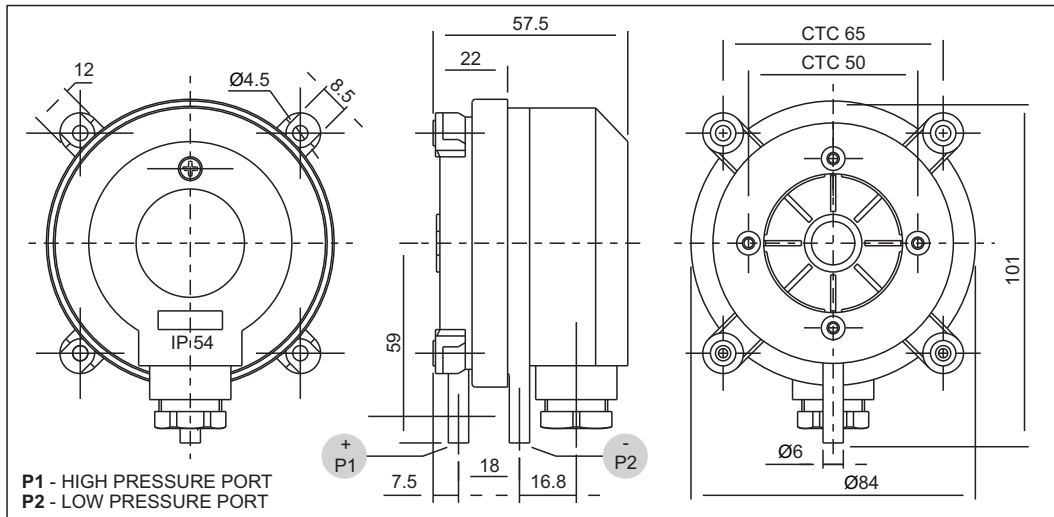
### Principle of Operation

When the effective force generated by the pressure difference in the lower and upper chamber of the pressure capsule exceeds/falls beyond the balancing spring forces, an electrical element is actuated.

### Mounting

The detail mounting dimensions are shown in Fig. 1

Fig. 1



P1 = higher pressure

P2 = lower pressure

\*Use two screws only, for mounting

\*\*Remove transport protection from P2

**Note :** Do not install upside down with trip pressure of less than 50 Pa.